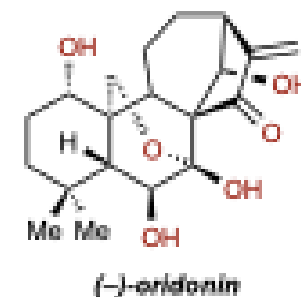
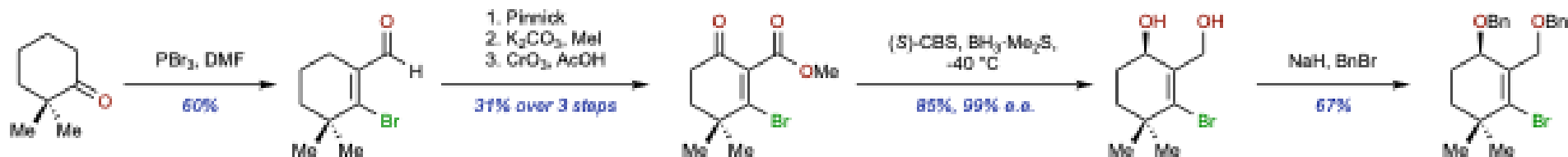


Background

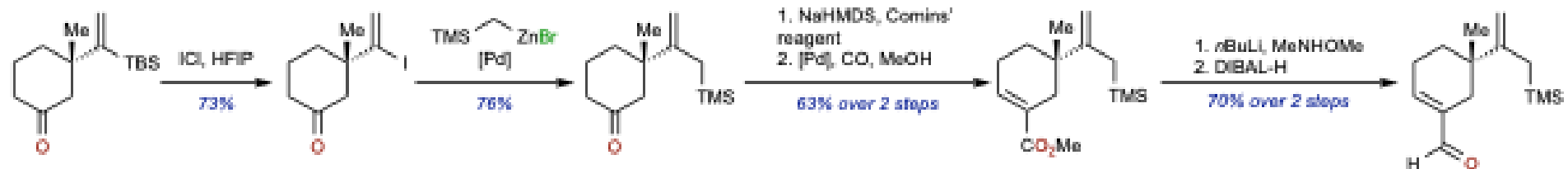
- A diterpenoid that is biosynthetically related to *ent*-kaurene
- Widely investigated in preclinical and clinical settings
- The major active component in *Rabdosia rubescens*, an over-the-counter anti-inflammatory medicine available in China
- Many semi-synthetic efforts, one of which entered phase I clinical trials for treatment of leukemia
- Potential also for application in neuroprotection and treatment of neurodegenerative diseases
- Mechanism of action studies indicate interaction with the α -methylene cyclopentenone motif



Western Fragment Synthesis



Eastern Fragment Synthesis



Luo, T. et al. *J. Am. Chem. Soc.* **2019**, 141, 20048–20052

