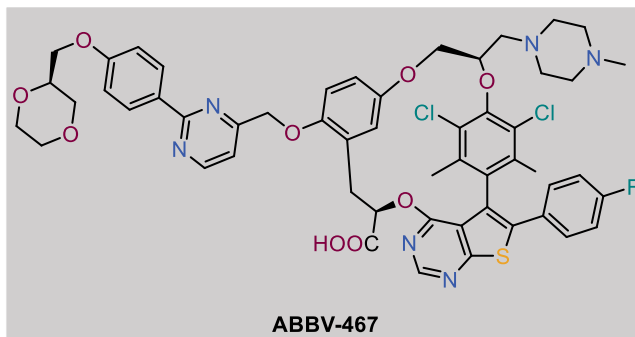


Background

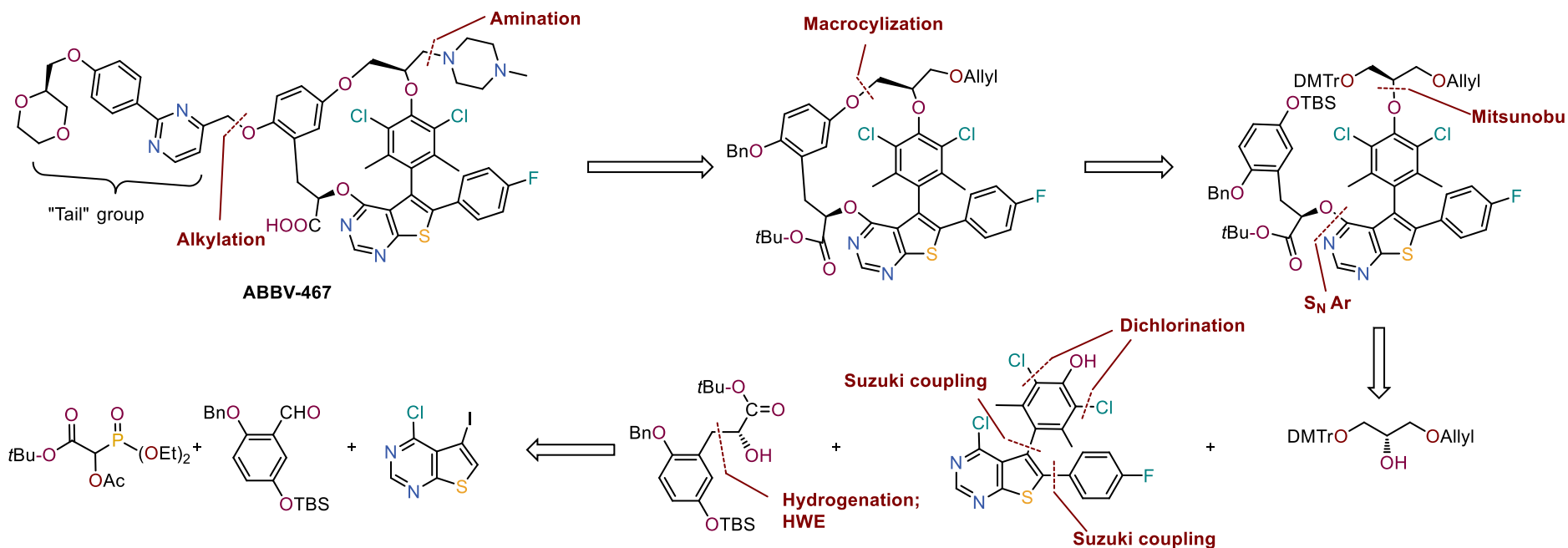
- Potent and selective MCL-1 inhibitor, potential multiple myeloma.
- Short half-life, enable sophisticated drug level optimizing in IV infusion.
- 17-membered macrocyclic ring with 3 ether linkage
- Decagram prepared
- Disease control in a patient with MM, CT cardiac troponin increases in 4 of 8 patients



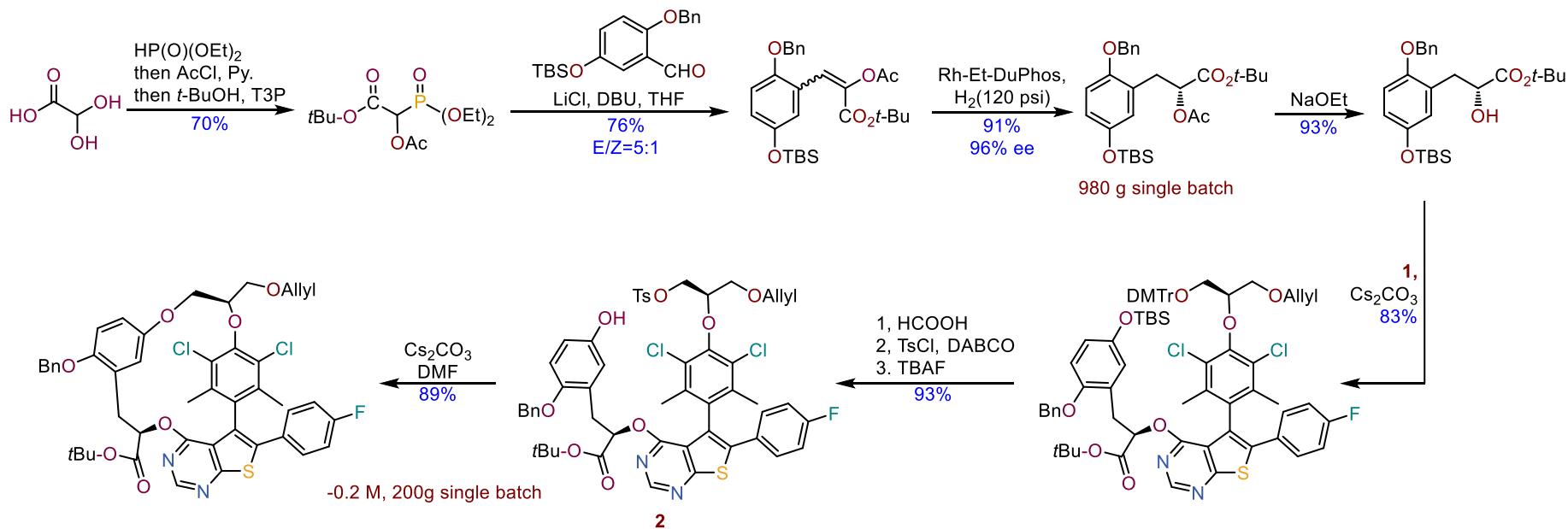
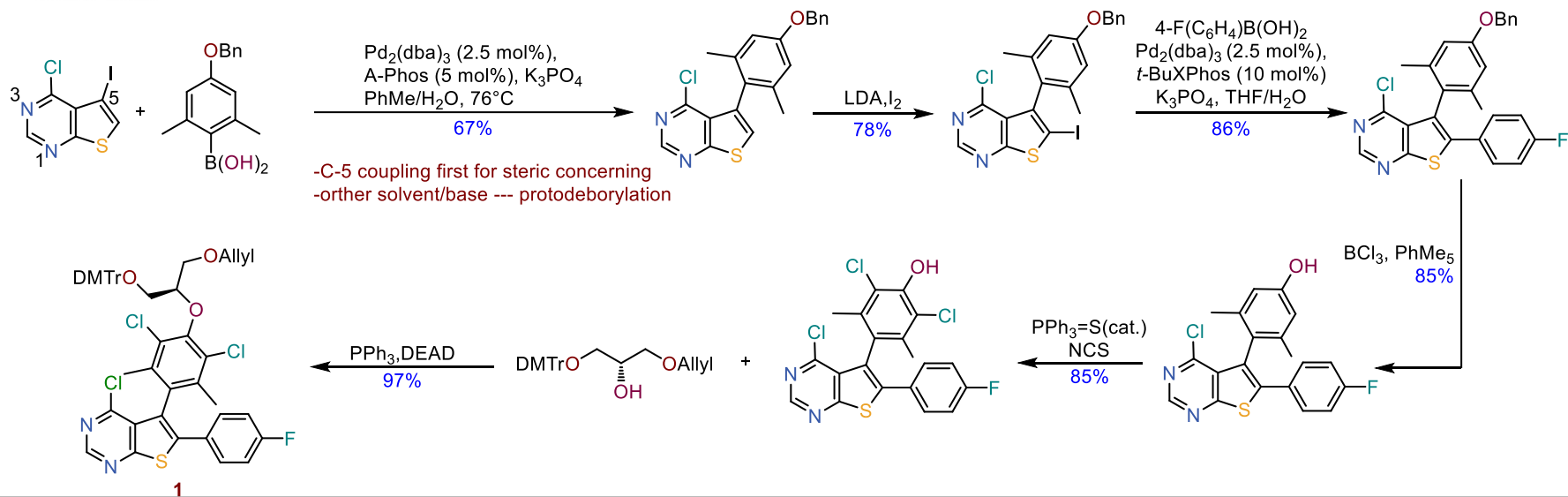
abbvie

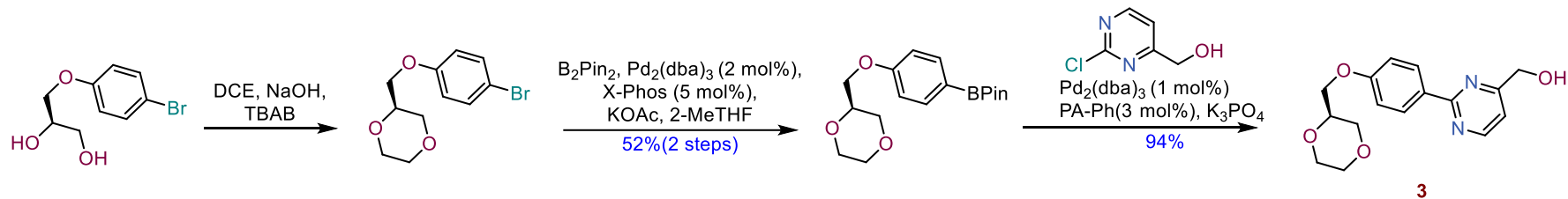
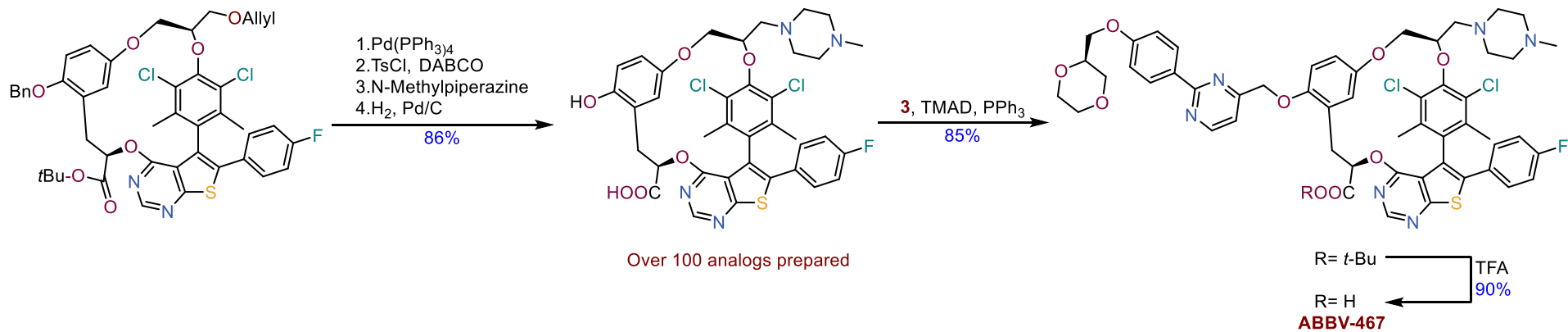
Souers, A. J. et al. *Commun Med* 3, 154 (2023). <https://doi.org/10.1038/s43856-023-00380-z>

Retrosynthetic Analysis



Brady, P. D. et al. *J. Org. Chem.* 2023, 88, 22, 15562–15568. <https://doi.org/10.1021/acs.joc.3c00939>





1D NOESY enhancement

