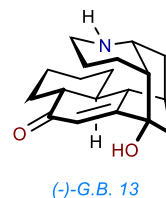


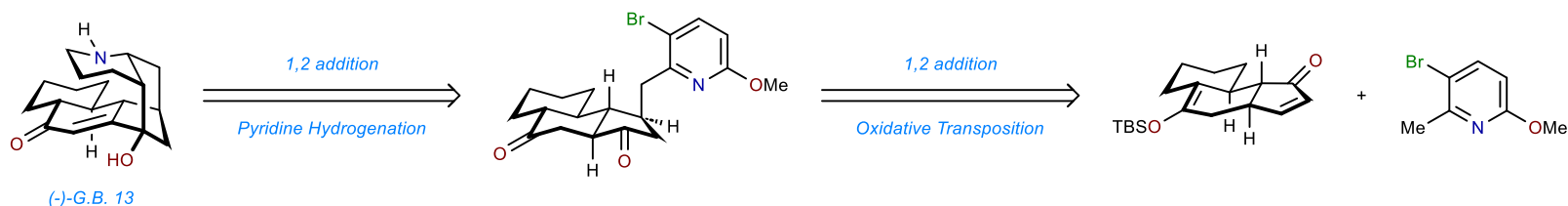
Introduction

- G.B. 13, a member of the *Galbulimima* alkaloids, was isolated from the *Galbulimima belgraveana* tree that is native to Australia and Papua New Guinea.
- Prior to Sarpong's reported synthesis G.B. 13 had been prepared by Mander, Movassaghi, Chackalamannil, and Evans.

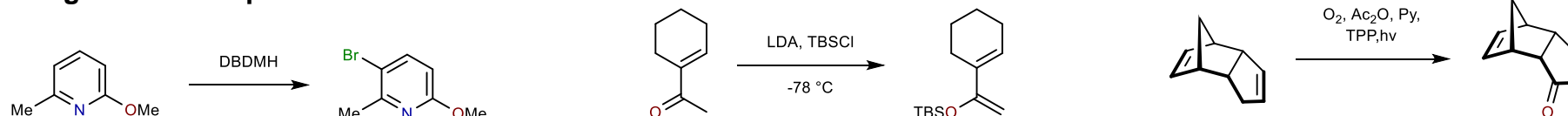


Sarpong, R. *J. Am. Chem. Soc.* **2009**, 131, 13244-13245. <https://doi.org/10.1021/ja9063487>

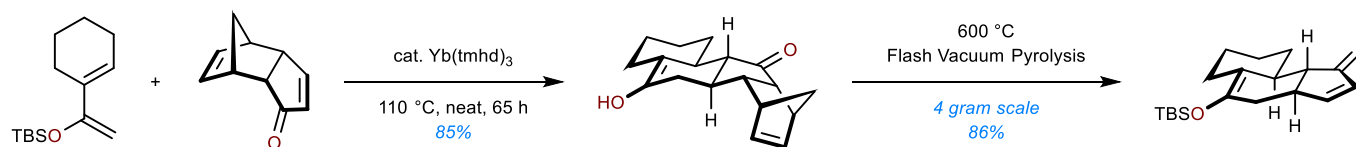
Retrosynthesis



Starting Material Preparation



Synthesis



<https://stoltz2.caltech.edu/seminars/2018DPS.pdf>

Synthesis

